

DOI: 10.24850/j-tyca-2019-05-10

Articles

Agricultural furrow irrigation inefficiency in the basin of the Laguna de Bustillos, Chihuahua, Mexico: geometric characteristics of agricultural plots and aquifer depletion

Ineficiencia de riego rodado agrícola en la cuenca de la Laguna de Bustillos, Chihuahua, México: características geométricas de las parcelas agrícolas y abatimiento del acuífero

Luis C. Alatorre¹

Alfredo Granados²

Luis C. Bravo³

María E. Torres⁴

Lara C. Wiebe⁵

Mario I. Uc⁶

Manuel O. González⁷

Erick Sánchez⁸

Hugo L. Rojas⁹

Víctor Salas¹⁰

¹Program of Geoinformatics of Universidad Autónoma de Ciudad Juárez, Chihuahua, México. President of La Sociedad Latinoamericana de Especialistas Percepción Remota y Sistemas de Información Espacial (SELPER-México). Leader of the academic body "Geoinformática aplicada a procesos geoambientales" (UACJ-CA-094), luis.alatorre@uacj.mx, ORCID: <https://orcid.org/0000-0003-0837-3381>

²Universidad Autónoma de Ciudad Juárez, Chihuahua, México, and president of the Universidad Agropecuaria Dual "Hermanos Escobar", agranados@uacj.mx; : <https://orcid.org/0000-0002-8989-4420>

³Program of Geoinformatics of Universidad Autónoma de Ciudad Juárez, Chihuahua, México, luis.bravo@uacj.mx; <https://orcid.org/0000-0002-9825-3940>

⁴Program of Geoinformatics of Universidad Autónoma de Ciudad Juárez, Chihuahua, México, elena.torres@uacj.mx; <https://orcid.org/0000-0003-3492-3914>

⁵Universidad Autónoma de Ciudad Juárez, Chihuahua, México, lara.wiebe@uacj.mx; <https://orcid.org/0000-0002-6336-0885>

⁶Program of Geoinformatics of Universidad Autónoma de Ciudad Juárez, Chihuahua, México, mario.uc@uacj.mx; <https://orcid.org/0000-0002-0151-6872>

⁷Program of Geoinformatics of Universidad Autónoma de Ciudad Juárez, Chihuahua, México, octavio.gonzalez@uacj.mx; <https://orcid.org/0000-0003-3484-3295>

⁸ Universidad Autónoma de Ciudad Juárez, Chihuahua, México, esanchez@uacj.mx; <https://orcid.org/0000-0001-7963-1128>

⁹Program of Geoinformatics of Universidad Autónoma de Ciudad Juárez, Chihuahua, México, hlrojas@uacj.mx; <https://orcid.org/0000-0002-2483-9228>

¹⁰Program of Geoinformatics of Universidad Autónoma de Ciudad Juárez, Chihuahua, México, victor.salas@uacj.mx; <https://orcid.org/0000-0002-0258-7816>

* Authors to whom correspondence should be addressed, Luis Carlos Alatorre: luis.alatorre@uacj.mx

Abstract

The objective of this research was to determine the relationship between the inefficiency of furrow irrigation, the geometric characteristics of agricultural plots and the depletion of the aquifer conditions of the Laguna Bustillos basin (Chihuahua, Mexico) in recent decades (1991-2012). The main results were: the analysis of geometric characteristics showed that the Menonite properties have the least favorable conditions for the use of furrow irrigation; the index of inefficiency of

furrow irrigation demonstrated the existence of agricultural plots that exceed 2.5 to 13 times the maximum allowed length; the analysis of the spatial and temporal evolution of the depletion of the aquifer showed that the areas with higher depletion (up to -80 m depth) are located mainly in Mennonite properties; it was shown that the index of inefficiency of furrow irrigation is directly related to the geometrical properties of agricultural plots and to the level of depletion of the aquifer. It is clear that reversing this problem will require a land use plan that includes the geometric reconfiguration of agricultural plots or the use of new technologies such as sprinkler and drip irrigation, as well as territorial strategies that increase the areas of natural and artificial recharge of the aquifer.

Keywords: geometric characteristics of agricultural plots, index of inefficiency of furrow irrigation, depletion of the aquifer, Mennonite properties, SIG, remote sensing.

Resumen

El objetivo de esta investigación fue el de determinar la relación que guarda la ineficiencia de riego rodado por surcos con las propiedades geométricas de los predios agrícolas y con el abatimiento que ha presentado en las últimas décadas (1991-2012) el acuífero de la cuenca de la Laguna Bustillos, Chihuahua, México. Los principales resultados fueron; i) el análisis de las propiedades geométricas demostraron que la propiedad menonita es la que tiene las condiciones menos favorables para la utilización del riego rodado por surcos; ii) el índice de ineficiencia de riego rodado por surcos demuestra la existencia de predios agrícolas que exceden 2.5 a 13 veces el largo máximo permitido; iii) el análisis de la evolución espacial y temporal del abatimiento del acuífero, demuestra que las zonas con mayor abatimiento (hasta -80 m) se localizan principalmente en la propiedad menonita; y finalmente iv) se demostró que el índice de ineficiencia de riego rodado por surco se relaciona directamente con las propiedades geométricas de los predios y con el nivel de abatimiento del acuífero. Queda claro que para revertir esta problemática se requerirá de un plan de ordenamiento territorial que incluya la reconfiguración geométrica de los predios agrícolas o la utilización de nuevas tecnologías como el riego por aspersión y goteo, y finalmente estrategias territoriales que incrementen las zonas de recarga natural y artificial del acuífero.

Palabras clave: características geométricas de las parcelas agrícolas, índice de ineficiencia en riego rodado, abatimiento del acuífero, propiedades Menonitas, SIG, sensores remotos.

Fecha de recibido 31/08/2018

Fecha de aceptado 06/12/2018

Introduction

Water availability has become a major problem worldwide, especially in arid and semi-arid regions (Alatorre et al., 2015), where irrigation farming is done mainly by exploiting groundwater (Chauhan et al., 2008; Granados et al., 2013; Alatorre et al., 2015). About 80% of the groundwater extracted worldwide is used for irrigation (Wang et al., 2001; Keshavarz et al., 2005). In Mexico, about 76% of all water is allocated for agricultural use (CONAGUA, 2014). Moreover, increased demand for water for urban, industrial and ecological uses has led to a decline in the availability of water for agriculture. Therefore, the agricultural sector faces the challenge of producing more food with less water, which could be achieved by making a more efficient use of water and increasing crop yields (Zwart and Bastiaanssen, 2004). For all this, the scarcity of surface water and the overexploitation of aquifers, as well as the competition between different uses, are major concerns in countries where agro-ecological conditions are dominated by arid and semiarid environments.

In Mexico, in 2010, about 37% of the total volume of water allocated for consumptive uses (i.e. uses in which the water is consumed by the activity itself) came from groundwater (CONAGUA, 2011a). The agricultural sector, which includes agriculture, aquaculture, livestock and other uses, had an allocated volume of water of about 61800 hm³ yr⁻¹, of which 33.8% was extracted from groundwater (CONAGUA, 2011b). In contrast, of the 11400 hm³ yr⁻¹ allocated for urban public and domestic use, 62.2% came from groundwater. According to the National Water Commission of Mexico (CONAGUA, 2011a), of the 653 aquifers in the

country, 32 were overexploited in 1975 (i.e. more water was being extracted from those 32 aquifers than it was recharged). By 1985, overexploitation affected 80 aquifers, and by December 31, 2009 the number had increased to 100; 53.6% of the groundwater used nationwide was being extracted from these aquifers. It is a disturbing fact that more than half of the groundwater used in Mexico comes from overexploited aquifers, but it is even more alarming that, according to CONAGUA (2011a), the agricultural use of groundwater increased by 23.2% between 2001 and 2009, while urban public and domestic uses of groundwater increased by 30.3% in the same period. In particular, the aquifer underlying the basin of Laguna Bustillos, in Chihuahua, Mexico, which is classified as the aquifer with the highest anthropogenic pressure in northwestern Mexico, has been seriously depleted (Diaz et al., 2013; Alatorre et al., 2015). This aquifer is located in a closed basin, a crucial hydrologic characteristic that explains the level of pressure to which it is subjected, as well as its depletion rate. It is recharged only by rainwater and return flows from irrigation, with an average recharge of $115 \text{ hm}^3 \text{ yr}^{-1}$ (CONAGUA, 2009). Contrary to what would be expected, 1782 wells have been authorized in this basin with internal drainage, with an official allocation of $198 \text{ hm}^3 \text{ yr}^{-1}$; still more serious is that this allocation is not respected, and $264 \text{ hm}^3 \text{ yr}^{-1}$ are actually extracted (CONAGUA, 2012), which generates a considerable deficit of $149 \text{ hm}^3 \text{ yr}^{-1}$. Out of the total groundwater used in this region, 92.7% is for agricultural use, 4% for urban use and 3.3% for livestock activities.

To address the deficit in the availability of water resources in the region, it is necessary to adopt water saving measures in all sectors, but especially in agriculture, which currently operates with water use efficiencies well below what would be appropriate. In order to save water and increase crop yields, agricultural irrigation strategies should be programmed and scheduled precisely; new high efficiency irrigation technologies, such as sprinkler and drip systems, should be used; and land management practices should also be improved (Zaman et al., 2001). About 90% of the world's irrigated land is irrigated by traditional irrigation methods (i.e. furrow irrigation) that are relatively inefficient and have various efficiency problems (Tiercelin and Vidal, 2006). For example, the FAO estimates that an area of approximately 20-30 million hectares (ha) irrigated by surface irrigation methods has been severely damaged by salt accumulation; it also estimates that the area affected by salinity will increase by 0.25-0.5 million hectares per year (FAO,

2002). Surface irrigation methods include furrow irrigation, which has been reported as one of the least efficient methods compared to other irrigation methods (Burt et al., 1997); however, currently is one of the most common methods used for irrigating agricultural land. Furrow irrigation is defined as the application of water through narrow, evenly spaced (between 1.0 and 2.0 m) channels (furrows) running across the field. Although the application efficiency of this method is relatively low (Ampas and Baltas, 2009), and efforts are still being done to improve it. This is because furrow irrigation is a well-known, simple and economical method, and farmers tend to adopt new approaches that improve current practices.

Engineers specialized in the design of agricultural irrigation systems are in constant search of new methods or practices that maximize the efficiency of agricultural irrigation. The agricultural committee of the American Society of Civil Engineers (ASCE) defines irrigation efficiency as the ratio of the volume of water which is beneficially used to the volume of irrigation water applied. Irrigation efficiency tends to increase with the use of updated modern methods. For example, pressurized drip irrigation has the potential to increase efficiency in the application of water to crops because the farmer can apply small and frequent amounts of water to meet the evapotranspiration needs of crops; the reported irrigation efficiency of this method varies between 80 and 90% (Battikhi and Abu-Hammad, 1994; Chimonides, 1995). In the case of sprinkler irrigation, efficiency can range from 54 to 80% (Chimonides, 1995; Zalidis et al., 1997). In contrast, the efficiency of furrow irrigation systems varies from 40 to 70% (Oster et al., 1986; Battikhi and Abu-Hammad, 1994; Chimonides, 1995; Zalidis et al., 1997).

There are several approaches to increase the efficiency of agricultural production using furrow irrigation. One approach involves balancing water savings and lower irrigation pumping costs with the loss of income associated with the decrease in crop yield; it also involves using the least-cost approach to pursuit production efficiency based on crop coefficients associated with evapotranspiration and crop water demand (Raghuwanshi and Wallender, 1996; 1997a; 1997b). For example, the application of low intensity irrigation translates into lower irrigation costs, but also into lower crop yields due to the water stress conditions to which the crop is subjected when the percentage of available moisture in the soil passes from Field Capacity (Fc) to the Permanent Wilting Point (PWP). Therefore, the requirements and costs of a given

irrigation system depend on designing it for a given crop, using the water application technology that is appropriate to meet the water demand of the crop during its various vegetative stages. For example, irrigation systems with high flow rates (irrigation by flooding) will result in high rates of back flush runoff (surplus flows at the end of the furrow that result in lower final irrigation efficiency). In this case, more water is used and irrigation costs are higher, considerably increasing the loss of water and contaminating the soil by the accumulation of salt that results from the high rates of evapotranspiration. Therefore, this approach requires the integration of various models, based on a temporal and spatial analysis, to calculate soil moisture (available water), application efficiency of irrigation (hydraulics of furrow irrigation) and crop production (transformation of m³ of water into tons of production); this might allow to design optimal strategies for balancing production costs. In general, the integration of these models to improve the efficiency of furrow irrigation helps optimize planting schedules, irrigation programs, applied flows and harvest time (Raghuwanshi and Wallender, 1994).

The minimal cost approach consists in increasing the efficiency of furrow irrigation by optimizing the length of the furrows, without considering irrigation programs or the minimal discharge required for the water to reach the end of the plot, avoiding excessive back flush runoff that result in loss of efficiency by taking into account the physical properties of soils (slope, permeability, texture, hydraulic conductivity, cation exchange capacity, etc.) and the shape of the agricultural plots (Raghuwanshi and Wallender, 1997). For example, Holzapfel et al. (1986; 1987) used linear and nonlinear optimization models to design surface irrigation systems taking into account the physical-chemical properties of soils and the correlation between the irrigation efficiency and the design variables of agricultural plots. An alternative to evaluate methods to the increased efficiency of furrow irrigation under the minimum production cost approach is the use of Geographic Information Systems (GIS) and remote sensing, which in recent decades have been used for precision farming (Nahry et al., 2011). The use of these tools has allowed the implementation of decision making strategies aimed to increase crop production (National Research Council, 1997). The most prominent applications include spatial and temporal analysis of field samples, mapping, analysis and management of specific areas according to the physicochemical properties of the soil, management of pest populations, analysis of the phenological characteristics of crops, etc.

(Weiss, 1996; Nemenyi et al., 2003). The development of maps of agricultural areas that include information relevant for the management of all factors involved is essential for the implementation of strategies that lead to a more efficient and sustainable production (Fridgen et al., 2004). Fleming et al. (2000) conducted an analysis of maps of agricultural areas and concluded that the color of soil, the topography and the historical data of previous farming experiences are useful data for improving crop productivity. Remote sensing is a very powerful tool in precision agriculture, where its application is mainly based on the spectral response of soils and crops to different wavelengths (Beñigueñi et al., 2008; Lee et al., 2004; Fleming et al., 2000; Daniel et al., 2004; Seelan et al., 2003; Sullivan et al., 2005; Moreenthaler et al., 2003; Lark and Stafford, 1997; Johnson et al., 2003; Brock et al., 2005; De Wit and Clevers, 2004; Buenemann et al., 2011; Low et al., 2013, 2015; Murakami et al., 2001; Wardlow and Egbert, 2008; Sharma et al., 2011; Martínez-Casasnovas et al., 2005).

The overall objective of this research was to determine the relationship between the inefficiency of furrow irrigation, the geometric characteristics of agricultural plots, and the depletion of the aquifer of the basin of Laguna de Bustillos (Chihuahua, Mexico) recorded in recent decades (1991-2002). For this purpose, the following specific objectives were defined: i) digitalization of all agricultural plots located in the basin of the Laguna Bustillos; ii) determination of the geometric characteristics and shape parameters of the agricultural plots; iii) establishment of an index of the inefficiency of furrow irrigation according to the maximum allowed length of the furrows; iv) determination of the depletion of the aquifer in recent decades (1991-2002); v) analysis of the spatial correlation between the inefficiency of furrow irrigation and the geometric characteristics of agricultural plots.

Study area and local issues

The study area is located in the basin of the Laguna de Bustillos, between coordinates 28° 13' 19" and 28° 59' 35" N, and 106° 34' 39" and 107° 10' 33" W (Figure 1A), with a total area of 3298 km². It is a

closed basin of irregular shape with internal drainage, geographically bounded by the mountain ranges of Pedernales, San Juan, Salitrera, Chuchupate, Sierra Azul and Rebote; the only supply of water is from rain. The basin has an average elevation of 2000 meters above sea level (masl), and is surrounded on the north, east, west and southwest by a number of peaks averaging 2400 meters masl, with some peaks reaching up to 2887 masl. (Figure 1B). The National Water Commission (CONAGUA, 2010) indicates that the place has an average annual rainfall of 415.7 mm, with tempered semi-dry climate, an average temperature of 14.6 °C and a maximum of 38 °C throughout the year.

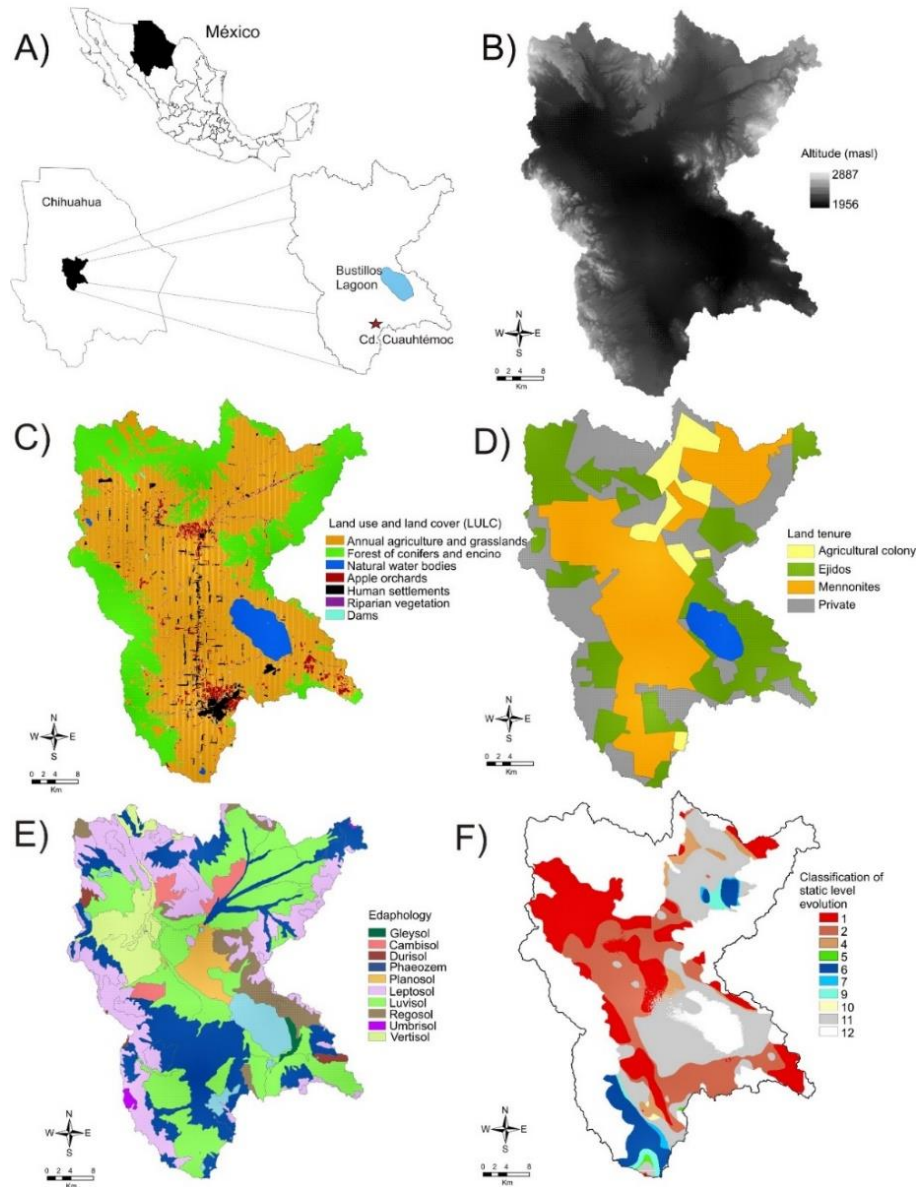


Figure 1. Geographical characteristics of the study area: A) general location of the basin of the Laguna de Bustillos; B) Digital Terrain Model (DTM) and limits of the aquifer of the basin of the Laguna de Bustillos; C) LULC for the year 2014 (Bravo et al., 2015); D) land tenure (Chihuahua State Government); E) edaphological units (INEGI, 2014; vectorial data set of edaphological characteristics, scale 1:250,000, series II); F) temporal and spatial evolution of the static level of the aquifer of the basin of the Laguna de Bustillos during the years 1973, 1991 and 2000 (Alatorre et al., 2015).

Regarding the types of land use and land cover (LULC) in the basin of the Laguna de Bustillos (Figure 1C; Bravo et al., 2015), annual agricultural cover and grasslands are mainly located in the valley (fluvial system). This type of cover extends near the foothills and occupies a large area of 1972 km² (59.80%) bordered by oak-pine forest in the surrounding mountains and foothills, which cover an area of 981 km² (29.76%; other types of cover occupy a small proportion of the study area (<5%) (Table 1).

Table 1. Spatial distribution of the types of land use and land cover (LULC) in the basin of the Laguna de Bustillos.

Categories	Area (km ²)	%
Annual agricultural and grasslands	1972	59.80
Oak-pine forest	981	29.76
Natural water bodies	114	3.47
Apple orchards	85	2.57
Human settlements	106	3.20
Riparian vegetation	32	0.96
Dams	9	0.26
Total	3298	100

The area is mostly owned by Mennonites, who occupy an area of 1256 km² (Figure 1D; Table 2). Mennonites arrived in Chihuahua in 1921, when they bought 112,000 hectares belonging to old cattle ranches of the nineteenth century; these ranches were located in the catchment area of the aquifer. The lands not purchased by Mennonites were distributed as Ejidos under postrevolutionary agrarian reform policies (Castro-Martinez, 1999) or sold to ex-cowboys and ex-laborers of the old ranches in the region as private properties or agricultural colonies (Castro-Martinez, 2000).

The arrival of foreign immigrants with a different culture, and the way in which the land was sold established a particular form of spatial organization of the agricultural properties in the basin. Mennonite properties dominate the bottom of the valley, which has the best conditions for agriculture. In contrast, Ejido properties, which occupy an area of approximately 906 km² are located mainly in the mountains and piedmont areas, where physiographic characteristics do not allow for intensive agricultural exploitation. Private cattle ranches are also found

in the mountains; agricultural colonies are the type of land tenure that occupies the smallest area.

Table 2. Spatial distribution of land tenure in the basin of the Laguna de Bustillos

Land tenure	Area (km ²)	%
Agricultural colony	214	7
Ejidos	906	28
Mennonites	1256	36
Private	922	29
Total	3298	100

Regarding the spatial distribution of FAO soil properties, the bottom of the valley (fluvial system) is mainly occupied by Phaeozem soils (Figure 1E), which are characterized by a marked accumulation of organic matter in the topsoil, which makes them fertile soils that are able to support a variety of crops and pastures. There are also Vertisol soils, whose main characteristic is the alternation between expansion and contraction of the clay, which makes these soils friable during the dry season and plastic during the wet season. This makes tilling very difficult and hinders the formation of root systems, except during the short periods of transition between the two seasons. Nonetheless, with a good soil practice and management, these are very productive soils. Luvisols have great potential for a large number of crops because they are moderately weathered soils with a high degree of saturation. Leptosols predominate in the mountains and foothills. These soils are characterized by their low depth (less than 30 centimeters) and their high content of gravel. They are unsuitable for cultivation, with very limited potential for tree crops or grass. Therefore, it is a common policy in Mexico to keep them under forest cover, since their high susceptibility to erosion makes it necessary to control their use.

A previous research conducted by Alatorre et al. (2015) that analyzed the temporal and spatial evolution of the static groundwater level of the aquifer at the basin of the Laguna de Bustillos during the years 1973, 1991 and 2000, classified the behavior of the static level into twelve categories (Figure 1F). The categories were: 1) Depletion rate greater than 1 m y⁻¹ in 1991-2000 with an increase greater than 1 m y⁻¹ in 1991-2000 compared to 1973-1991 (high depletion with a high increase): 2) Depletion rate greater than 1 m y⁻¹ in 1991-2000 with an increase or decrease between -1 and 1 m y⁻¹ in 1991-2000 compared to

1973-1991 (high depletion rate with a low increase or decrease); 3) Depletion rate greater than 1 m y^{-1} in 1991-2000 with a decrease greater than -1 m y^{-1} in 1991-2000 compared to 1973-1991 (high depletion rate with a high decrease); 4) Depletion rate lower than 1 m y^{-1} in 1991-2000 with an increase greater than 1 m y^{-1} in 1991-2000 compared to 1973-1991 (low depletion rate with a high increase); 5) Depletion rate lower than 1 m y^{-1} in 91-00 with a decrease greater than -1 m y^{-1} in 91-00 compared to 73-91 (low depletion rate with a high decrease); 6) Recharge rate greater than -1 m y^{-1} in 91-00 with a decrease greater than -1 m y^{-1} in 91-00 compared to 73-91 (high recharge rate with a high decrease); 7) Recharge greater than -1 m y^{-1} in 91-00 with an increase or decrease between -1 and 1 m y^{-1} in 91-00 compared to 73-91 (high recharge rate with a low increase or decrease); 8) Recharge rate greater than -1 m y^{-1} in 91-00 with an increase greater than 1 m y^{-1} in 91-00 compared to 73-91 (high recharge rate with a high increase); 9) Recharge rate lower than -1 m y^{-1} in 91-00 with a decrease greater than -1 m y^{-1} in 91-00 compared to 73-91 (low recharge rate with a high decrease); 10) Recharge rate lower than -1 m y^{-1} in 91-00 with an increase greater than 1 m y^{-1} in 91-00 compared to 73-91 (low recharge rate with a high increase); 11) Depletion or recharge rate between -1 and 1 m y^{-1} in 91-00 with an increase or decrease between -1 and 1 m y^{-1} in 91-00 compared to 73-91 (low depletion or recharge rate with a low increase or decrease). Overall, the categories that predominate in the study area are related to those areas that showed a greater depletion rate between 1991 and 2000 compared to the 1973-1991 period; these are the areas with the highest extraction of water, which has continued to increase in recent years (shown in red, Figure 1F).

Materials and Methods

Digitization of agricultural plots

The digitization of agricultural plots in the basin of the Laguna de Bustillos was based on SPOT-5 satellite images with high spatial resolution (color fusion mode; 2.5 m) taken in 2012. The images were provided by the Receiving Station in Mexico, which is part of the SPOT constellation (ERMEXS) and is administered by the Mexican Navy. Three scenes (60 x 60 km) were used to cover the study area; they were georeferenced with a quality assurance/quality control (QA/QC) aiming at a root mean square error (RMSE) that remained below 0.5 pixels (<1.25 m), and were projected to the coordinate system UTM-13N, with WGS84 datum and ellipsoid (Figure 2). The digitization process was done following photo-interpretation criteria based on the shape and the elements associated with each polygon, at an observation scale of 1:10,000.

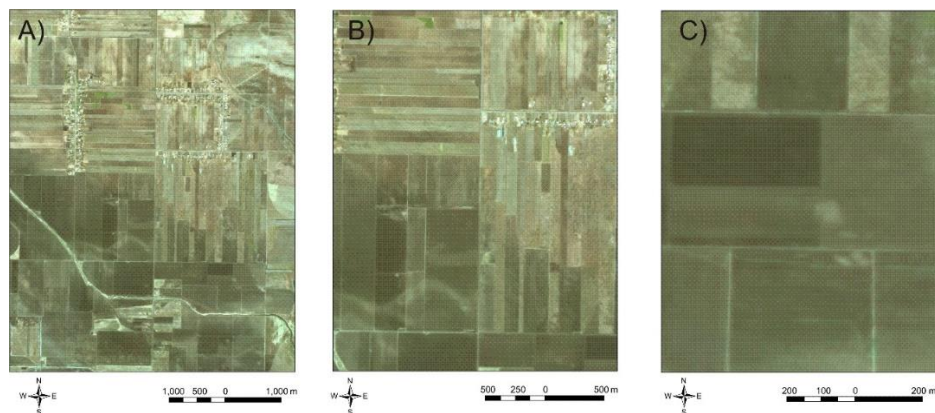


Figure 2. Level of detail of a SPOT-5 image according to the scale of observation: A) 1:30,000; B) 1:15,000; C) 1: 5,000.

Geometric characteristics of agricultural plots

The geometric characteristics of agricultural plots, and the physical and chemical characteristics of the soils, establish the minimum criteria

necessary to determine the inefficiency of the flow, distribution and application of water in an irrigation system. In this study, in addition to determining the basic geometric characteristics of agricultural plots, such as length, width and perimeter, some shape parameters were analyzed in order to assess their likely spatial correlation with the inefficiency of furrow irrigation and the depletion of the aquifer.

The most widely used shape parameter is the Gravelius coefficient, also called compactness coefficient (Gravelius, 1914). It indicates the relationship between the perimeter of an area with the perimeter of a theoretical circular area of the same surface. Its expression is as follows:

$$C_g = \frac{P}{2\sqrt{\pi \cdot A}}$$

Where C_g is the Gravelius or compactness coefficient, P is the perimeter of the area, and A is the surface area. The more irregularly shaped an area is, the higher the compactness coefficient. A perfectly circular area would have a value of $C_g = 1$; the more irregular the area, the more the value of C_g will differ from 1.

Miller's circularity coefficient (R_c) (Miller, 1953) compares the surface of an area with the surface of a circle whose circumference is equal to the perimeter of the area in question; it is given by:

$$R_c = \frac{4\pi A}{P^2}$$

Where A is the surface and P the perimeter of the area. This expression can take values between 0 and 1, with 1 corresponding to a circular area.

The elongation ratio (R_e) is defined as the ratio of the perimeter of a circle to the maximum length of a surface with the same area. The formula proposed by Schumm (1956) is as follows:

$$R_e = \frac{1.129A^{0.5}}{L}$$

Where A is the surface area and L is the maximum length of the area. Values of R_e lower than 1 correspond to elongated shapes; the lower the R_e value, the more elongated the shape of the surface.

Inefficiency of furrow irrigation

The efficiency of furrow irrigation depends on a number of variables such as the volume of irrigation water, the application time, the length, spacing and shape of the furrows, the roughness and slope of the terrain, the infiltration characteristics of the soil, and the water demand of the crop, among others. Therefore, the length of the furrows directly affects the efficiency of furrow irrigation affecting the amount of water applied for agriculture. The maximum length of the furrows is limited by the slope of the terrain, the geometric characteristics of the agricultural plots, and the physical and chemical properties of the soil (Yitayew et al., 1985; Wallender and Rayej, 1987; Raghuwanshi and Wallender, 1996; 1998).

Thus, in this study we determined the maximum length of the furrows for each agricultural area according to the characteristics of the soil and the slope of the terrain, considering an irrigation depth of 10 cm (Table 3; adapted from Palacios, 1996). From these data, we determined an index of inefficiency of furrow irrigation based on the relationship between the proportion of the length of the actual furrow and the maximum allowed length of the furrow according to the criteria shown in Table 3. A value between 0 and 1 indicates that the length of the actual furrow does not exceed its maximum allowed length; a value greater than 1 indicates that the actual length exceeds the maximum allowed length. For example, a value of 3 indicates that the length of the actual furrow exceeds three times its maximum allowed length, with a negative impact on irrigation efficiency. For the purposes of this study, we considered a value of 1.25 as acceptable for the inefficiency coefficient; this value indicates that the actual length of the furrow exceeds its maximum allowed length by 25%. To determine the spatial distribution of the values indicated by this index of irrigation inefficiency in each of the agricultural plots, we used slope maps (%) and maps of soil properties (Figure 3).

Table 3. The maximum length of furrows (m) as a function of the slope, net depth (cm) and basic infiltration (BI; cm hr⁻¹) (Withers and Vipond, 1980; Palacios, 1996).

Soil type	Net depth	Slope (%)
-----------	-----------	-----------

Texture	BI (cm/hr)	of water (cm)	0.25	0.5	1	1.5	2
Light	> 5	5	150	120	70	60	50
		10	210	150	110	90	70
		15	260	180	120	120	90
Medium	1 .- 3	5	250	170	130	100	90
		10	375	240	180	140	120
		15	420	290	220	170	150
Heavy	< 0.5	5	300	220	170	130	120
		10	450	310	250	190	160
		15	530	380	280	250	200

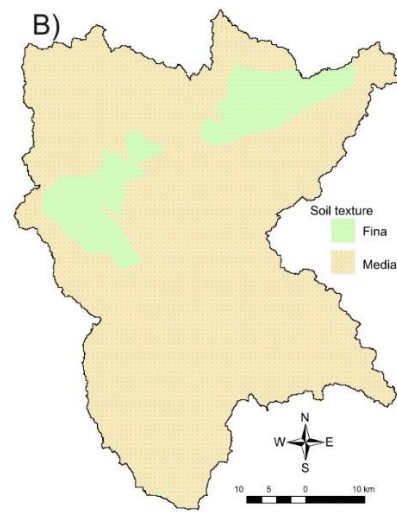
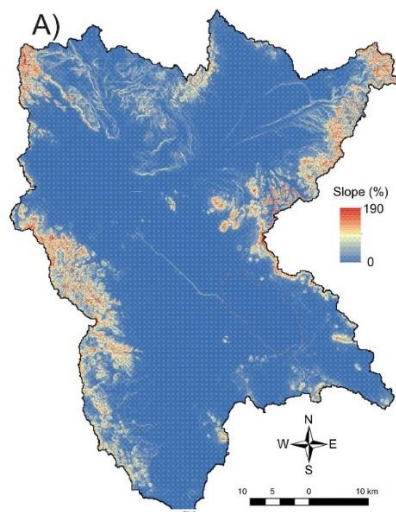


Figure 3. Characteristics used to determine the maximum length of the furrows for each agricultural state: A) slope of the terrain according to the "Modelo Continuo de Elevaciones Mexicano 3.0" (CEM 3.0) with a 15-meter resolution (INEGI, 2013). B) soil texture, obtained from the vectorial data set of edaphological characteristics; scale 1: 250,000, Series II (INEGI, 2014).

Depletion of the static water level (SWL) of the aquifer (1991-2002)

Depletion of static water level (SWL) is a common impact at overpumped aquifers, affecting its natural conditions. In numerical analysis, the term "interpolation" refers to the estimation of new data points based on the knowledge of a discrete set of points. In engineering and certain sciences, a certain number of data points can be often obtained by sampling or from an experiment, and it is possible to build a function that fits these points and that can be used to predict the spatial distribution and values of new points for which there is no data. Thus, interpolation methods can be used to predict unknown values of any parameter characterizing a geographical point, such as: elevation, rainfall, chemical concentrations, noise levels, etc. In our case, we used interpolation methods to perform a temporal and spatial analysis of the depletion of the SWL of the aquifer of the basin of the Laguna de Bustillos.

Equipotential lines corresponding to the SWL of the aquifer at the basin of the Laguna de Bustillos were digitized from images produced by geohydrological studies carried out by the National Water Commission in the years 1991 and 2002 (Figure 4). These are the most recent measurements of the SWL of this aquifer. We then determined the vertices of each equipotential line in order to evaluate the interpolation methods contained in the Geostatistical Analysis module of the ArcGIS 9.3 software.

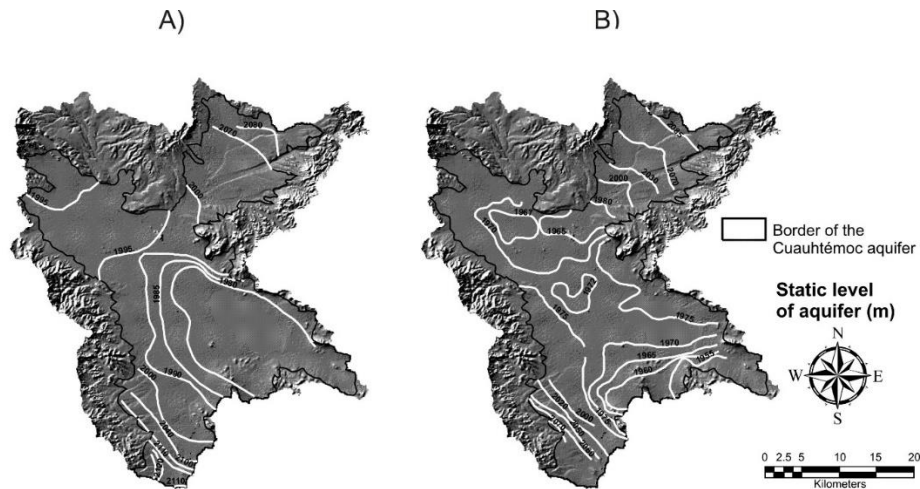


Figure 4. Static level curves for the years 1991 and 2002 (CONAGUA, 1991 and 2002).

The following interpolation methods were used: i) Inverse Distance Weighting (IDW); ii) Global Interpolation Polynomial; iii) Local Interpolation Polynomial; (iv) Radial Basis Function (RBF). Radial basis functions include the following techniques: completely regularized spline, spline with tension, multiquadric, inverse multiquadric and thin plate spline; each of these techniques can be used to make interpolations of the parameters of a surface with an optimal smoothing level, depending largely on the mean square error, which should be as close to zero as possible. The last interpolation method used was: iv) Ordinary Kriging. After obtaining predicted values with each of the interpolation methods, we evaluated the prediction errors (mean error and mean square error) and selected the most optimal method for creating maps of the zone based on the data for 1991 and 2002 (Alatorre et al., 2015). Finally, we determined the degree of depletion of the aquifer of the basin of the Laguna de Bustillos by subtracting the values of 1991 from those of 2002; positive values should be interpreted as recharge areas, and negative values as depletion.

Statistical correlation between irrigation inefficiency, geometric characteristics and level of aquifer depletion

Pearson's linear correlation test was used to determine the existence of statistically significant spatial correlation between the index of inefficiency of furrow irrigation, the geometric characteristics of agricultural plots (length, width, perimeter, compactness, circularity and elongation) and the behavior in recent decades of the SWL of the aquifer of the basin of Laguna de Bustillos. For this, we conducted a sampling of 1000 random points over the study area, determining the index of inefficiency of furrow irrigation, geometric characteristics and the behavior of the SWL of the aquifer for each point (Figure 5). Before using these data to calculate Pearson correlation coefficients, we verified that there were no outliers, which may cause erroneous results.

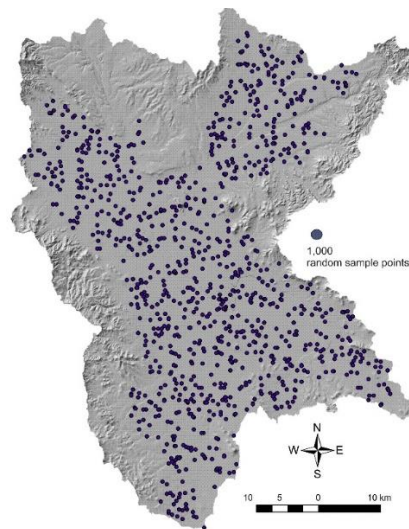


Figure 5. Spatial distribution of the 1000 random points over the study area that were used calculate Pearson correlation coefficients.

RESULTS AND DISCUSSION

Geometric characteristics of the agricultural plots

The digitization of the information that characterizes the agricultural plots located in the study area took about a year; the result is shown in Figure 6A. The basin of the Laguna de Bustillos contains 19,994 agricultural plots, with an average area of 6.9 ha (STD \pm 7.46 ha), giving a total of 137.892 hectares. These results show that the smaller agricultural plots are ejidos, while the largest ones are Mennonite properties or agricultural colonies (Figure 1D and 6B).

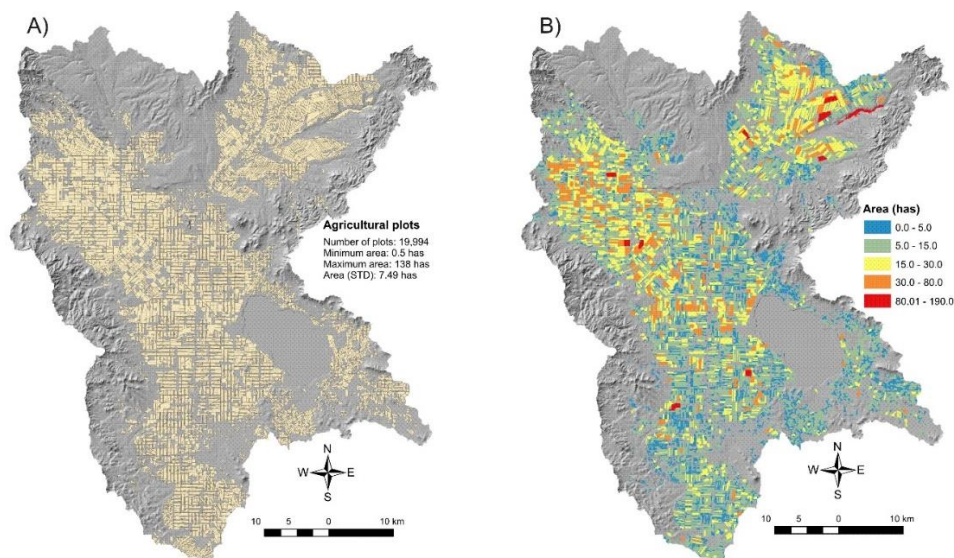


Figure 6. Result of the digitization of agricultural plots located in the basin of Laguna de Bustillos: A) agricultural plots; B) spatial distribution of the surface (ha) of the agricultural plots.

From these results, we determined basic geometric characteristics such as length, width and perimeter, as well as shape parameters such as compactness, circularity and elongation (Figure 7). Most of the study area is dominated by agricultural plots of 600-1000 m to 1000-2000 m in length, mainly Mennonite properties and agricultural colonies; plots shorter than 420 m were all ejidos (Figure 1D and 7A). Most agricultural plots are less than 400 m in width, mainly Mennonite properties and agricultural colonies; in the north, there are some scattered properties ranging from 400 to 1000 m in width; these plots include Mennonite properties, agricultural colonies and ejidos (Figure 1D and 7B). The perimeter of most agricultural plots measures 1500-5000 m; these are mostly Mennonite properties and agricultural colonies. Agricultural plots with perimeters of less than 1500 m can be found to the southwest of

the area, where many ejidos are located (Figure 1D and 7C). The analysis of the length, width and perimeter of the agricultural plots shows that Mennonite properties are the largest, longest and less wide agricultural plots; consequently, they have the largest perimeters, which means that they are not very suitable for the application of furrow irrigation; nonetheless, the dominant irrigation system on these ag-fields is furrow irrigation, which is the less efficient.

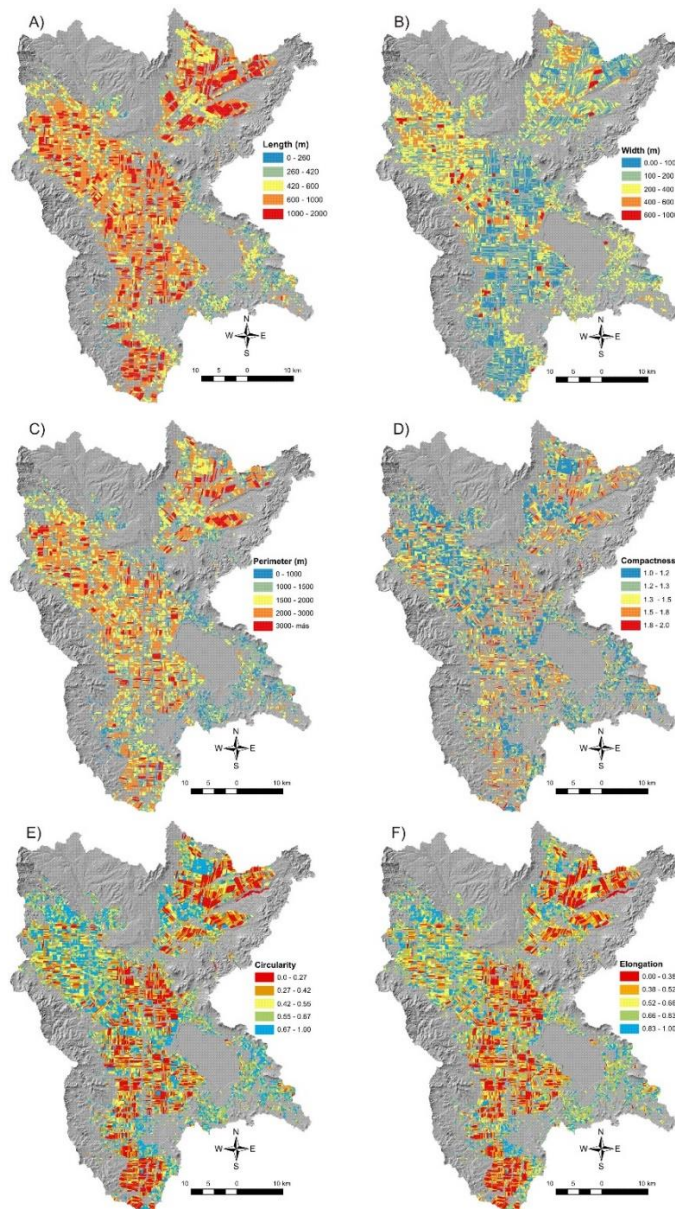


Figure 7. Basic geometric characteristics and shape parameters of the agricultural plots found in the basin of the Laguna de Bustillos. A) Length (m); B) Width (m); C) Perimeter (m); D) Compactness; E) Circularity; F) Elongation.

Regarding the shape parameters, agricultural plots with values of compactness close to 1 (i.e., with less irregular areas or almost equal in length and width) are mostly ejidos and agricultural colonies, although in the northwestern part of the study area there are some Mennonite properties with this feature. However, most agricultural plots in the central part of the study area, which are mostly Mennonite properties, are irregularly shaped, with values of compactness greater than 1 (Figure 1D and 7D). The same can be said of circularity; less irregular agricultural plots, with values closer to 1, are ejidos and agricultural colonies, while most Mennonite properties are irregularly shaped and have values of circularity closer to 0 (Figure 1D and 7E). Regarding the elongation ratio, the most elongated agricultural plots, with values lower than 1, are Mennonite properties, while the less elongated plots are ejidos and agricultural colonies (Figure 1D and 7F). Thus, the shape parameters of the agricultural plots in this area indicate that Mennonite properties use space very differently than ejidos and agricultural colonies, which undoubtedly influences the ways in which groundwater is used for irrigation.

These results coincide with the findings of Bravo et al. (2015), who used landscape ecology indicators to analyze the spatial heterogeneity and structure of different land uses under the same types of land tenure in this and other nearby areas. Although these authors did not work at the level of individual agricultural plots and studied instead large patches of land use, they found also that Mennonite properties have a smaller ratio between area and perimeter (i.e. the perimeter is very large compared to the area) than other forms of land tenure. This finding is clarified and confirmed by this study, which shows that most individual agricultural plots in the basin are greatly elongated compared to the area they occupy.

Very elongated agricultural plots, as are most Mennonite properties in the study area, are qualitatively and quantitatively different from agricultural plots under other types of land tenure. The shape of these properties is clearly reminiscent of the agricultural plots observed in regions of the Netherlands and Germany, from where this religious group emerged during the protestant reform in Europe (Warkentin,

1959). In those regions, most agricultural plots were located along rivers and floodplains, and their elongated shape was meant to provide all farmers equal access to water.

This type of spatial arrangement, practiced by the ancient Mennonites, is known as "joint occupation of space" (Francis, 1948), and made sense under biophysical and water availability conditions that were very different from those observed in the basin of the Laguna de Bustillos. In this area, unlike the region from which the first Mennonites emerged, there is very little surface water, and virtually all water used for irrigation is obtained from groundwater sources. It is certainly a spatial arrangement of great historical and cultural value, but in this case has the disadvantage of favoring irrigation inefficiency.

Determination of an index of the inefficiency of furrow irrigation

To determine the index of inefficiency of furrow irrigation, we determined first the maximum allowed length of the furrows determined according to the characteristics of the soils and the slope. That maximum allowed length ranged from 70 to 300 m, but in most of the area the maximum allowed length was between 100 and 250 m (Figure 8A). The index of inefficiency of furrow irrigation, based on the ratio between the length of the actual furrow and the maximum allowed length, shows that the study area contains agricultural plots that meet the criteria of maximum allowable length (values of less than 1.25); these plots are mainly located in the south of the study area and more frequently in the foothills (ejido properties), although it is worth noting that there are other agricultural plots that meet this criteria scattered throughout the basin and under other types of land tenure (Figure 1D and 8B). This result shows that most of the agricultural plots in the study area do not meet the criteria of the index of inefficiency of furrow irrigation (with values ranging from 1.25 to 13.0), as some of them exceed 1.25 to 13 times the maximum allowed length of the furrows. As demonstrated by the basic geometric characteristics and shape parameters of the agricultural plots located in the study area, the

Mennonite properties have the worst conditions of inefficiency for furrow irrigation, with index values of 3.5-5.0 to 5.0-13.0.

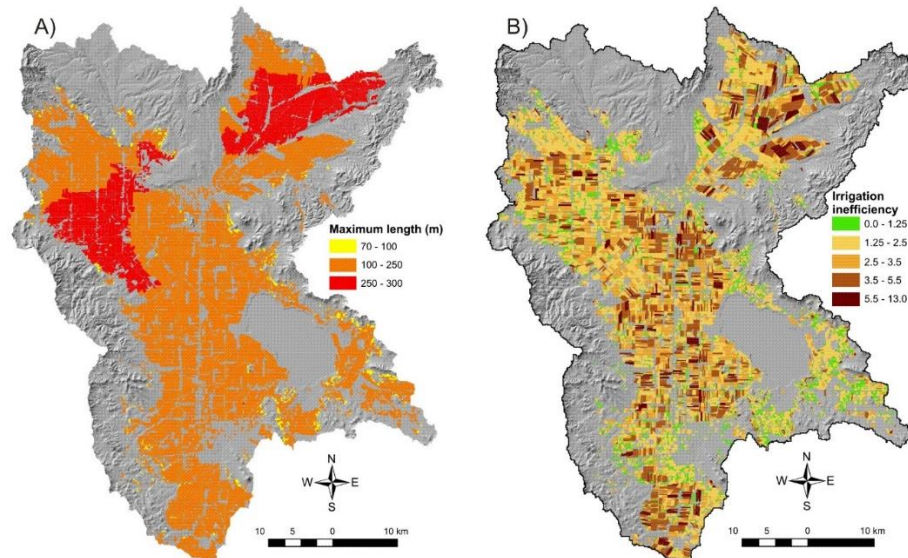


Figure 8. Determining the maximum length of the furrows (A) and the index of irrigation inefficiency (B).

Numerous studies have shown that when furrow irrigation is used under certain conditions (establishment of an irrigation calendar, control of the application time, timely change of siphons, slope control, reduction of runoff at furrow ends), the efficiency values range from 40 to 70% (Oster et al., 1986; Battikhi and Abu-Hammad, 1994; Chimonides, 1995; Zalidis et al., 1997). These results demonstrate that, in our study area, it would be a challenge to have minimum acceptable irrigation efficiencies (50%) if the maximum length of the furrows is exceeded, even when controlling parameters such as the volume of irrigation water delivered, cutting time, spacing and shape of the furrows, roughness, slope and infiltration characteristics of the soil. It is worth noting that if the efficiency of irrigation is measured in economic terms ($t\ ha^{-1}\ mm^{-1}$), the system of furrow irrigation is the least efficient. Al-Jamal et al. (2001) conducted a study comparing the economic efficiency of different methods of irrigation, and found that the best results are obtained with the sprinkler system, followed by drip and furrow irrigation. However, they also mention that the drip system is the best to maximize production ($t\ ha^{-1}$), followed by the sprinkler system and by furrow irrigation.

Spatial and temporal evolution of the SWL of the aquifer of the basin of the Laguna de Bustillos (1991-2002).

The values of the static level of the aquifer of the Laguna de Bustillos (Figure 4) were used to compare different interpolation methods according to their prediction errors (the mean error and the mean square error) (Alatorre et al., 2014). The regularized Spline method showed the most optimal values according to the work done by Alatorre et al. (2014). The results of the interpolation process show that in 1991 the static level had higher values than those observed in 2002 (Figure 9A and B), indicating a decrease of the static level of the aquifer of the basin of the Laguna de Bustillos. To estimate the depletion rate, we subtracted the values of 1991 from those of 2002 (Figure 9 C). The result of this subtraction shows a maximum depletion of -80 m in just 12 years (red zone); this translates into a depletion rate of -7.2 m y^{-1} , but there are also recharge areas where the SWL increase 20 m, at a recharge rate of $+1.8 \text{ m y}^{-1}$; these could be natural recharge areas. In general, the average SWL for the entire basin stood at -22 m, which translates into a depletion rate of 2 m y^{-1} .

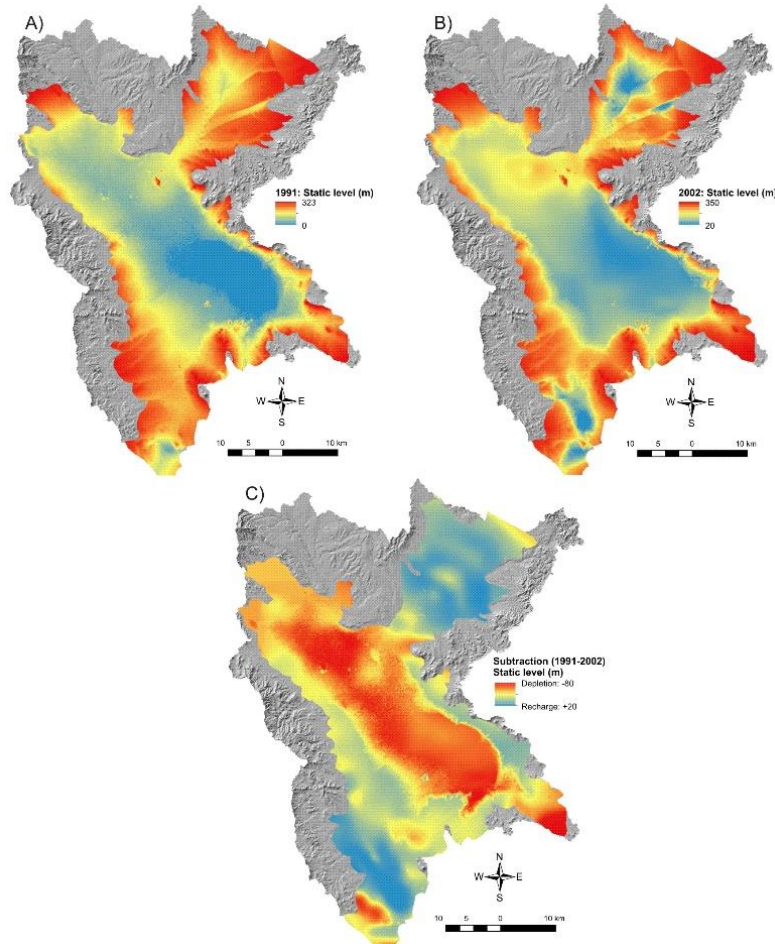


Figure 9. Temporal and spatial evolution of the static level of the aquifer of the basin of the Laguna de Bustillos (Map A and B represent depletion areas): A) static level in 1991; B) static level in 2002; C) subtraction of the static levels of 1991 from those 2002, showing depletion and recharge.

A previous work by Alatorre et al. (2015) carried out a mathematical modeling of the evolution of the SWL of the aquifer of the Basin of Laguna de Bustillos, and compared the periods 1973-1991 and 1991-2000. That work showed that the period 1991-2000 had a higher rate of depletion than that observed in the period 1973-1991; the area corresponding to this level of depletion was mainly located in the lowlands, which are dominated by Menonite properties. A study by CONAGUA (2002) showed that the evolution of the static level of the aquifer during the period 1988-1997 was marked by widespread depletion. The largest decreases were recorded in the lower portions of

the valley with values in the range of -20 to -25 m (-2.2 to -2.8 m y^{-1}); decreases of between -10 and -25m (-1.1 y 2.8 m y^{-1}) were recorded near the town of Cuauhtémoc, and of -15 m (-1.7 m y^{-1}) around the Laguna de Bustillos, which indicates that these decreases were caused by excessive extraction of groundwater. The average annual rate of depletion for this period was -2.0 m y^{-1} . In general, if these trends continue, the conclusions of the report of CONAGUA and COLPOS of 2007 will be confirmed. That report said that the solution to the problem of groundwater depletion in the region of Cuauhtémoc, Chihuahua, Mexico, exhibits a very high degree of complexity, mainly due to the huge recharge deficit, and that by 2019 the aquifer could become depleted.

Statistical correlation between variables

Our main result is that the index of inefficiency of furrow irrigation shows correlation with the geometric characteristics of the agricultural plots and with the level of depletion of the aquifer of the basin of Laguna de Bustillos in recent decades. The results of the Pearson's correlation test are shown in Table 4. The correlation between the variables had a high level of statistical significance (<0.01); only the width of agricultural plots showed no relationship with the index of inefficiency of furrow irrigation. In general, the results show that the inefficiency of furrow irrigation has a high correlation with the geometric characteristics of agricultural plots, and it's also statistically correlated with the depletion of the aquifer of the basin of Laguna de Bustillos.

Table 4. Results of Pearson's correlation test and level of statistical significance.

		Length	Width	Perimeter	Compactness	Circularity	Elongation	SWL 2002- 1991
Y	Furrow w n Pearson correlatio n	0.690**	0.006	0.630**	0.467**	-0.445**	-0.428**	0.141**

	Sig. (bilateral)	0.000	0.886	0.000	0.000	0.000	0.000	0.000
	N	1000	1000	1000	1000	1000	1000	1000

** . The correlation is significant at the 0.01 level (bilateral).

* . The correlation is significant at the 0.05 level (bilateral).

These correlation coefficients indicate that the differences in the shape of agricultural plots have a significant effect on the sustainability of groundwater. These differences are linked to the social practices of the human groups living in the catchment area of the aquifer, and put into perspective the importance of the cultural and historical aspects of environmental management and the regulation of groundwater use. Very elongated agricultural plots made sense in a different environmental reality, under different conditions of access to water. However, elongated agricultural plots are not suited for conditions characterized by water scarcity and the need to make efficient use of agricultural irrigation.

These correlation coefficients show the need to rearrange the shape and geometry of agricultural plots. Although it seems a matter of simply shortening the length of the plots, cultural motivations and resistances should be taken into account. If it is not possible to overcome these cultural aspects, the focus should turn to developing and adopting technologies that optimize the use of irrigation water in elongated plots.

CONCLUSION

The results of this research make a significant contribution to the understanding of the impact of anthropogenic activities on the land, including the ways in which the land is appropriated and exploited. The combination of remote sensing through SPOT images with photo-interpretation techniques showed to be a great tool for generating detailed maps of the agricultural plots located in the basin of the Laguna de Bustillos.

The following results are worth highlighting: the analysis of the geometric characteristics and shape parameters of agricultural plots showed that Menonite properties have the least favorable conditions for the use of furrow irrigation, as they are excessively elongated. The index of inefficiency of furrow irrigation, based on the physicochemical properties of the soil and the slope of the terrain, confirms this finding; the values of the index for Menonite properties indicate that these agricultural plots exceed by 2.5 to 13 times the maximum allowed length of the furrows.

Moreover, the analysis of the spatial and temporal evolution of the depletion of the aquifer in recent decades (1991-2002) shows that the areas with the highest levels of depletion (up to -80 m) correspond mainly to Menonite properties. The analysis of the correlation between variables showed that the index of inefficiency of furrow irrigation is directly related to the geometrical characteristics of the agricultural plots and the level of aquifer depletion. Finally, it is clear that addressing this problem will require a system of territorial planning that includes the geometrical rearrangement of the agricultural plots located in the basin or the use of new technologies such as sprinkler and drip irrigation, as well as territorial strategies that increase the areas of natural and artificial recharge of the aquifer.

Acknowledgements

To all members of the Academic Body "Geoinformática Aplicada a Procesos Geo-ambientales" (UACJ-CA-94). This material is supported by the National Institute of Food and Agriculture, U.S. Department of Agriculture, under award number 2015-68007-23130.

References

Alatorre, L.C., Díaz-Caravantes, R.E, Miramontes-Beltrán, S., Sánchez, E., & Bravo, L.C. (2015). Spatial and temporal evolution of Cuauhtémoc aquifer static level during the years 1973, 1991 and 2000: A geographical approach. *Journal Geographic Information Systems*, 6, 572-584. ISSN Print: 2151-1950.

- Ampas, V., & Baltas, E. (2009). Optimization of the furrow irrigation efficiency. *Glob. NEST J.*, 11 (4), 566–574.
- Battikhi, A.M., & Abu-hammad, A.H. (1994). Comparison between the efficiencies of surface and pressurized irrigation systems in Jordan. *Irrig. Drain. Syst.*, 8, 109-121.
- Bravo L. C., Alatorre, L. C., Díaz, R., Wiebe, L. C., & Moreno, R. (2015). Cultura y Apropiación del Espacio: Diferencias en los Paisajes Culturales de Menonitas y Mestizos de Chihuahua, México. *Journal of Latin American Geography*, 14(2), 77-100. <http://doi.org/10.1353/lag.2015.0023>
- Brock, A., Brouder, S.M., Blumhoff, G., & Hofmann, B.S. (2005). Defining yieldbased management zones for corn–soybean rotations. *Agronomy Journal*, 97, 1115–1128.
- Buenemann, M., Martius, C., Jones, J.W., Herrmann, S.M., Klein, D., Mulligan, M., Reed, M.S., Winslow, M., Washington-Allen, R.A., Lal, R., & Ojima, D. (2011). Integrative geospatial approaches for the comprehensive monitoring and assessment of land management sustainability: rationale, potentials, and characteristics. *Land Degrad. Dev.*, 22 (2), 226-239.
- Burt, C.M., Clemmens, A.J., Strelkoff, T.S., Solomon, K.H., Bliesner, R.D., Hardy, L.A., Howell, T.A., & Eisenhauer, D.E. (1997). Irrigation performance measures: efficiency and uniformity. *J. Irrig. Drain. Eng.*, 123, 423–442.
- Castro-Martínez, P. (1999). Ciudad Cuauhtémoc, Chihuahua: un fruto social de la Revolución Mexicana. *POLIS. Investigación y Análisis Sociopolítico y Psicosocial*, 99, 171–196.
- Castro-Martínez, P. (2000). *Ciudad Cuauhtémoc Chihuahua: Crónica de su Fundación* (primera edición, pp. 132). Universidad Autónoma Metropolitana-Iztapalapa, editorial CONACULTA-FONCA. ISBN: 970-654-559-X
- Chauhan, C.P.S., Singh, R.B., & Gupta, S.K. (2008). Supplemental irrigation of wheat with saline water. *Agricultural Water Management*, 95, 253–258.
- Chimonides, S.J. (1995). Irrigation management under water shortage conditions. In: Tsiourtis, N.X. (Ed.). *Water Resources Management*

Under Drought or Water Shortage Conditions (pp. 73-78). Balkema, Rotterdam.

CONAGUA, Comisión Nacional del Agua. (1991). *Actualización del estudio geohidrológico, políticas de operación y proyecto de manejo del acuífero del Valle de Cuauhtémoc, Chihuahua, Comisión Nacional del Agua* (contrato CNA-GRN-90-009). Recuperado de https://www.gob.mx/cms/uploads/attachment/file/103566/DR_0805.pdf

CONAGUA, Comisión Nacional del Agua. (2002). *Actualización del estudio geohidrológico, políticas de operación y proyecto de manejo del acuífero del Valle de Cuauhtémoc, Chihuahua, Comisión Nacional del Agua*. Recuperado de <http://www.conagua.gob.mx>

CONAGUA, Comisión Nacional del Agua. (2009). *Actualización de la disponibilidad media anual de agua subterránea acuífero (0805) Cuauhtémoc, Chihuahua, Comisión Nacional del Agua*. Recuperado de <http://www.conagua.gob.mx>

CONAGUA, Comisión Nacional del Agua. (2010). *Registro Público de Derechos de Agua (REPDA), Comisión Nacional del Agua*. Recuperado de www.conagua.gob.mx

CONAGUA, Comisión Nacional del Agua. (2011a). *Atlas del Agua en México, SEMARNAT-Gobierno Federal, México*. Recuperado de <http://www.conagua.gob.mx/CONAGUA07/Publicaciones/Publicaciones/SGP-18-11.pdf>

CONAGUA, Comisión Nacional del Agua. (2011b). *Estadísticas del Agua en México, Comisión Nacional del Agua*. Recuperado de www.conagua.gob.mx

CONAGUA, Comisión Nacional del Agua. (2012). *Actualización de la disponibilidad media anual de agua subterránea acuífero (0805) Cuauhtémoc, Chihuahua, Comisión Nacional del Agua*. Recuperado de https://www.gob.mx/cms/uploads/attachment/file/103566/DR_0805.pdf

CONAGUA, Comisión Nacional del Agua. (2014). *Estadísticas del Agua en México, Secretaría de Medio Ambiente y Recursos Naturales, Comisión Nacional del Agua, Subdirección General de Planeación*. Recuperado de <http://www.conagua.gob.mx/CONAGUA07/Publicaciones/Publicaciones/EAM2014.pdf>

CONAGUA, & COLPOS (2007). *Plan director: unión de asociaciones de usuarios de aguas subterráneas del acuífero de Cuauhtémoc, Chihuahua, S de RL de IP de CV, Comisión Nacional del Agua*. Recuperado de www.conagua.gob.mx

Daniel, K.W., Tripathi, N.K., Honda, K., & Apisit, E. (2004). Analysis of VNIR (400–1100 nm) spectral signatures for estimation of soil organic matter in tropical soils of Thailand. *International Journal of Remote Sensing*, 25, 643–652.

De Wit, A.J.W., & Clevers, J. (2004). Efficiency and accuracy of per-field classification for operational crop mapping. *Int. J. Remote Sens.*, 25 (20), 4091-4112.

Díaz-Caravantes, R.E., Bravo-Peña, L.C., Alatorre, L.C., & Sánchez-Flores, E. (2013). Presión antropogénica sobre el agua subterránea en México: una aproximación geográfica. *Revista de Investigaciones Geográficas-UNAM*, 82, 93-103. ISSN: 0188-4611.

El Nahry, A.H., Ali, R.R., & El Baroudy, A.A. (2011). An approach for precision farming under pivot irrigation system using remote sensing and GIS techniques. *Agricultural Water Management*, 98 , 517–531.

FAO, The Food and Agriculture Organization. (2002). *Crops and Drops Making the Best Use of Water for Agriculture* (first edition, pp. 22). Food and Agriculture Organization of The United Nations, Rome.

Fleming, K.L., Westfall, D.G., Wiens, D.W., & Brodahl, M.C. (2000). Evaluating farmer defined management zone maps for. *Precision Agriculture*, 2, 201–215.

Francis, E. K. (1948). Mennonite Institutions in Early Manitoba: A Study of Their Origins. *Agricultural History*, 22 (3), 144-155.

Fridgen, J.L., Kitchen, N.R., Sudduth, K.A., Drummond, S.T., Wiebold, W.J., & Fraisse, C.W. 2004. Managementzone analyst (MZA): software for subfieldmanagement zone delineation. *Agronomy Journal*, 96, 100–108.

Granados-Olivas, A., Creel, B., Sánchez-Flores, E., Chávez, J., & Hawley, J. (2012). *Thirty years of groundwater evolution with challenges and opportunities towards a binational planning for a holistic sustainable development*. SCERP Monographs. ISBN: 0-925613-53-3.

Gravelius, II (1914). *Grundrifi der gesamten Gewcisserkunde* (first edition). Band I: Flufikunde, Compendium of Hydrology, vol. I. Rivers. Goschen, Berlin, Germany.

Holzappel, E.A., Marino, M.A., & Morales, J.C. (1986). Surface irrigation optimization models. *ASCE J. Irrig. Drain. Div.*, 112 (1), 1–19.

Holzappel, E.A., Marino, M.A., & Morales, J.C. (1987). Surface irrigation nonlinear optimization models. *ASCE J. Irrig. Drain. Div.*, 113 (3), 379–392.

INEGI, Instituto Nacional de Estadística y Geografía. (2013). *Continúo de Elevaciones Mexicano 3.0 (CEM 3.0)*. Recuperado de <https://www.inegi.org.mx/app/geo2/elevacionesmex/>

INEGI, Instituto Nacional de Estadística y Geografía. (2014). *Conjunto de datos vectorial Edafológico escala 1: 250 000 Serie II* (Continuo Nacional). Recuperado de <http://www.conabio.gob.mx/informacion/metadatos/gis/eda250s2gw.xml?httpcache=yes&xsl=/db/metadatos/xsl/fgdc.html.xsl&indent=no>

Johnson, C.K., Mortensen, D.A., Wienhold, B.J., Shanahan, J.F., & Doran, J.W. (2003). Sitespecific management zones based on soil electrical conductivity in a semi-arid cropping system. *Agronomy Journal*, 95, 303–315.

Keshavarz, A., Ashrafi, S.H., Hydari, N., Pourn, M., & Farzaneh, A. (2005). Water allocation and pricing in agriculture of Iran. In: National Research Council (ed.). *Water Conservation, Reuse, and Recycling, Proceedings of an Iranian-American Workshop* (pp. 153–172), Washington, DC.: The National Academic Press.

Lark, R.M., & Stafford, J.V. (1997). Classification as a first step in the interpretation of temporal and spatial variation of crop yield. *Annals of Applied Biology*, 130, 111–121.

Lee, K., Cohen, W.B., Kennedy, R.E., Maierperger, T.K., & Gower, S.T. (2004). Hyperspectral versus multispectral data for estimating leaf area index in four different biomes. *Remote Sens. Environ.*, 91, 508–520.

Löw, F., Michel, U., Dech, S., & Conrad, L. 2013. Impact of feature selection on the accuracy and spatial uncertainty of per-field crop classification using support vector machines. *ISPRS J. Photogramm. Remote Sens.*, 85, 102–119.

- Löw, F., Fliemann, E., Abdullaev, I., Conrad, C., & Lamers, J.P.A. (2015). Mapping abandoned agricultural land in Kyzyl-Orda, Kazakhstan using satellite remote sensing. *Appl. Geogr.*, 62, 377-390.
- Martinez-Casasnovas, J.A., Martin-Montero, A., & Casterad, M.A. (2005). Mapping multi-year cropping patterns in small irrigation districts from time-series analysis of Landsat TM images. *Eur. J. Agron.*, 23 (2), 159-169.
- Miller, V.C. (1953). *A Quantitative Geomorphic Study of Drainage Basin Characteristics in the Clinch Mountain Area. Virginia and Tennessee.* Columbia University, Department of Geology, New York, NY, Project NR 389-042, Tech. Report 3.
- Moreenthaler, G.W., Khatib, N., & Kim, B. (2003). Incorporating a constrained optimization algorithm into remote sensing/precision agriculture methodology. *Acta Astronautic*, 53, 429-437.
- Murakami, T., Ogawa, S., Ishitsuka, N., Kumagai, K., & Saito, G. (2001). Crop discrimination with multitemporal SPOT/HRV data in the Saga Plains, Japan. *Int. J. Remote Sens.*, 22 (7), 1335-1348.
- National Research Council. (1997). *Precision Agriculture in the 21st Century: Geospatial and Information Technologies in Crop Management.* Washington, DC: The National Academies Press. Recuperado de <https://doi.org/10.17226/5491>
- Nemenyi, M., Mesterhazi, P., Pecze, Z., & Stepan, Z. (2003). The role of GIS and GPS in precision farming. *Computers and Electronics in Agriculture*, 40 (1-3), 45-55.
- Oster, J.D., Meyer, L., Hermsmeier, L., & Kaddah, M. (1986). Field studies of irrigation efficiency in Imperial Valley. *University of California, Berkeley Hilgardia*, 54 (7), 1-15.
- Palacios, V.E. (1999). *¿Por qué, Cuándo, Cuánto y Cómo Regar?. Para Lograr Mejores Cosechas* (primera edición, pp. 214). México: Colegio de Postgraduados.
- Raghuwanshi, N.S., & Wallender, W.W. (1994). Stochastic seasonal furrow irrigation model. *Am. Soc. Agric. Engrs.*, St. Joseph, MI, Paper No. 94-2021.
- Raghuwanshi, N.S., & Wallender, W.W. (1996). Modeling seasonal furrow irrigation. *ASCE J. Irrig. Drain. Div.*, 122 (4), 235-242.

Raghuwanshi, N.S., & Wallender, W.W. (1997a). Field measured ET as a stochastic process. *Agric. Water Manage.*, 32, 111–129.

Raghuwanshi, N.S., & Wallender, W.W. (1997b). "Economic optimization of furrow irrigation". *J. Irrig. and Drain. Engrg., ASCE*, 123(5), 377–385.

Raghuwanshi, N.S., & Wallender, W.W. (1998). Optimization of furrow irrigation schedules, designs and net return to water. *Agricultural Water Management*, 35, 209–226.

Schumm, S. (1956). Evolution of drainage systems and slopes in badland at Perth Amboy, New Jersey. *Bulletin of Geological Society of America*, 67, 597–646.

Seelan, S.K., Laguette, S., Casady, G.M., & Seielstad, G.A. (2003). Remote sensing applications for precision agriculture: a learning community approach. *Remote Sensing of Environment*, 88, 157–169.

Sharma, M.P., Yadav, M., Prawasi, R., Kumar, P., & Hooda, R.S. (2011). Cropping system analysis using remote sensing and GIS: a block level study of Kurkshetra district. *ARPN J. Agric. Biol. Sci.*, 6 (10), 45–51.

Sullivan, D.G., Shaw, J.N., & Rickman, D. (2005). IKONOS imagery to estimate surface soil property variability in two Alabama physiographies. *Soil Science Society of America Journal*, 69, 1789–1798.

Tiercelin, J.R., & Vidal, A. (2006). *Traite 'id'Irrigation* (second edition). Paris, France.

Wallender, W.W., & Rayej, M. (1987). Economic optimization of furrow irrigation with uniform and non uniform soil. *Trans. ASAE*, 30 (5), 1425–1429.

Wang, H., Zhang, L., Dawes, W.R., & Liu, C. (2001). Improving water use efficiency of irrigated crops in the North China. Plain measurements and modeling. *Agricultural Water Management*, 48, 151–167.

Wardlow, B.D., & Egbert, S.L. (2008). Large-area crop mapping using time-series MODIS 250 m NDVI data: an assessment for the U.S. Central Great Plains. *Remote Sens. Environ.*, 112, 1096–1116.

Warkentin, J. (1959). Mennonite Agricultural Settlements of Southern Manitoba. *Geographical Review*, 49, 342–268.

- Weiss, M. (1996). PF and spatial economic analysis: research challenges and opportunities. *American Journal of Agricultural and Applied Economics*, 78, 1275–1280.
- Withers, B., & Vipond, S. (1980). *Irrigation design and practice: Ithaca* (first edition, p. 129-154). New York: Cornell University Press.
- Yitayew, M., Letey, J., Vaux, H.J. Jr., & Feinerman, E., (1985). Factors affecting uniformity and optimal water management with furrow irrigation. *Irrig. Sci.*, 6, 201–210.
- Zalidis, G., Dimitriads, X., Antonopoulos, A., & Geraki, A., (1997). Estimation of a network irrigation efficiency to cope with reduced water supply. *Irrig. Drain. Syst.*, 11, 337-345.
- Zaman, W.U., Arshad, M., & Saleem, A., (2001). Distribution of nitrate nitrogen in the soil profile under different irrigation methods. *International Journal of Agriculture and Biology*, 2, 208–209.
- Zwart, S.J., & Bastiaanssen, W.G.M., (2004). Review of measured crop water productivity values for irrigated wheat, rice, cotton and maize. *Agric. Water Manage*, 69 (2), 115–133.